

Guide, Installation IIS 8.X i Windows Server 2012

Innehåll

1	ÄNDRINGSINFORMATION	2
2	FUNKTION	3
3	Förutsättningar	3
4	IIS 8 server roll och services	3
4.1	Förutsättningar	3
4.2	Installera serverrollen	3
4.3	Installera/verifiera IIS Role services	8

1 ÄNDRINGSINFORMATION

Rev.	Ändring	Datum
A	Första utgåvan	2013-03-04
B	Windows 2012R2 with IIS 8.5 included	2013-12-13

2 FUNKTION

Detta dokument beskriver installation av IIS rollen (IIS 8.X) samt de features som krävs i en installation av Web-baserad Marvinfunktioner .

3 Förutsättningar

Operativsystemet skall vara 64 bitars Windows Server 2012 med senaste uppdateringar utförda.

Den som utför installationen måste ha behörighet som lokal administratör i den aktuella servern.

4 IIS 8.x server roll och services

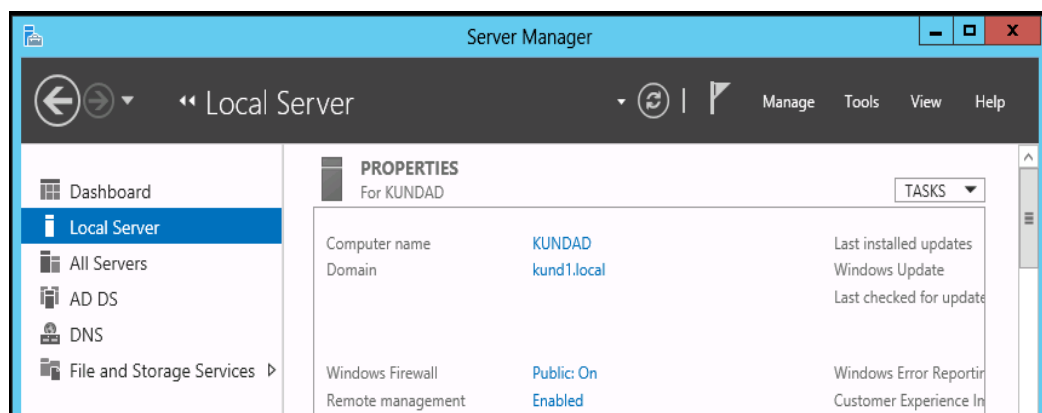
4.1 Förutsättningar

Kunskap om administration av Windows Server 2012/2012R2.
Inloggning som lokal administratör i Windows 2012 servern.

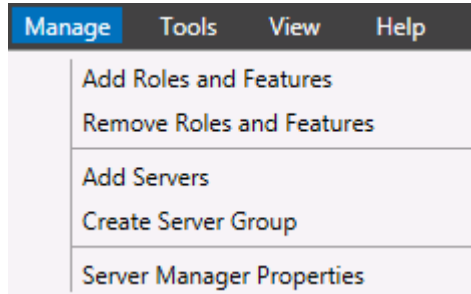
4.2 Installera serverrollen

Om IIS rollen inte är installerad

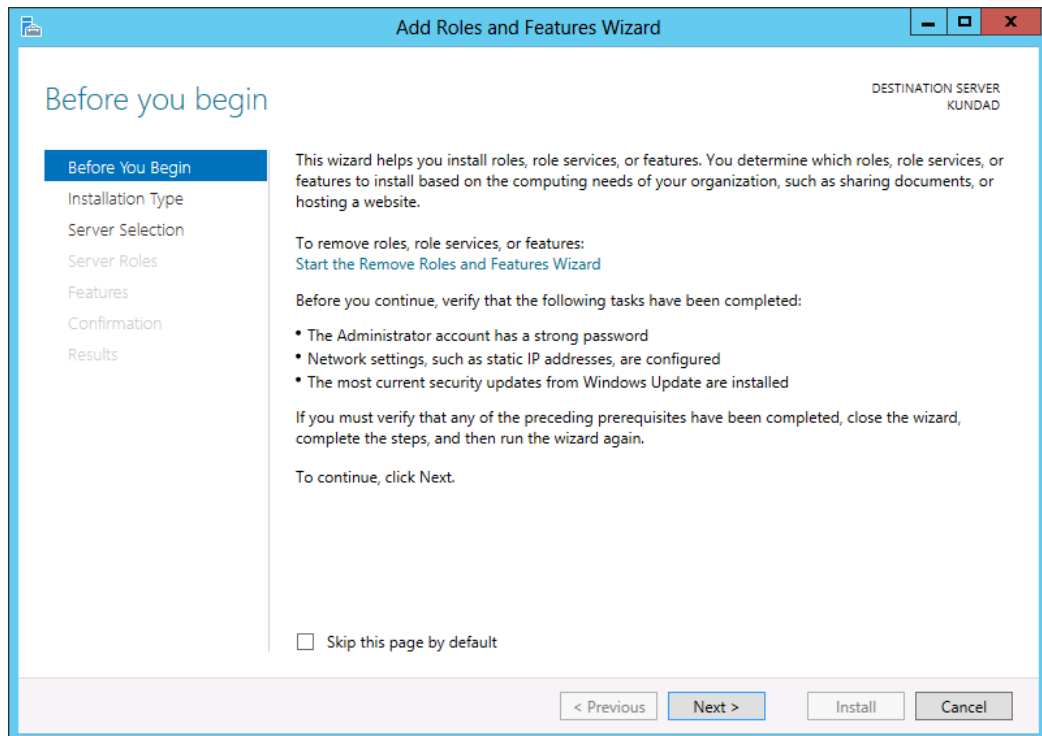
1. Öppna "Server Manager"



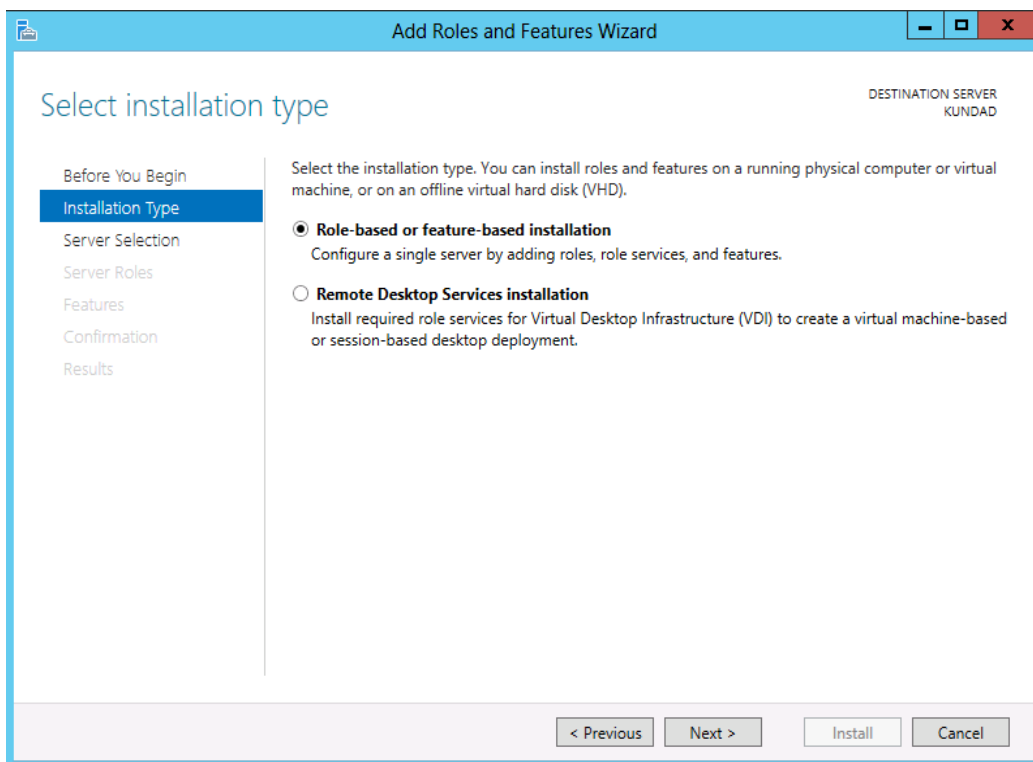
2. Klicka på **Manage**



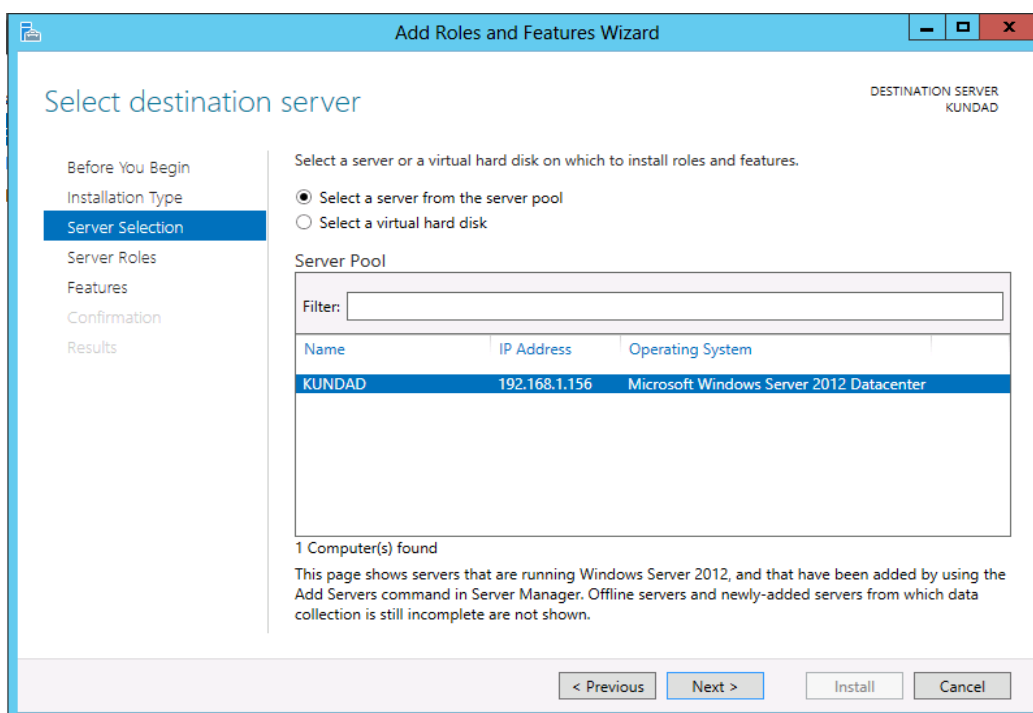
3. Välj "Add Roles and Features" och klicka på **Next**



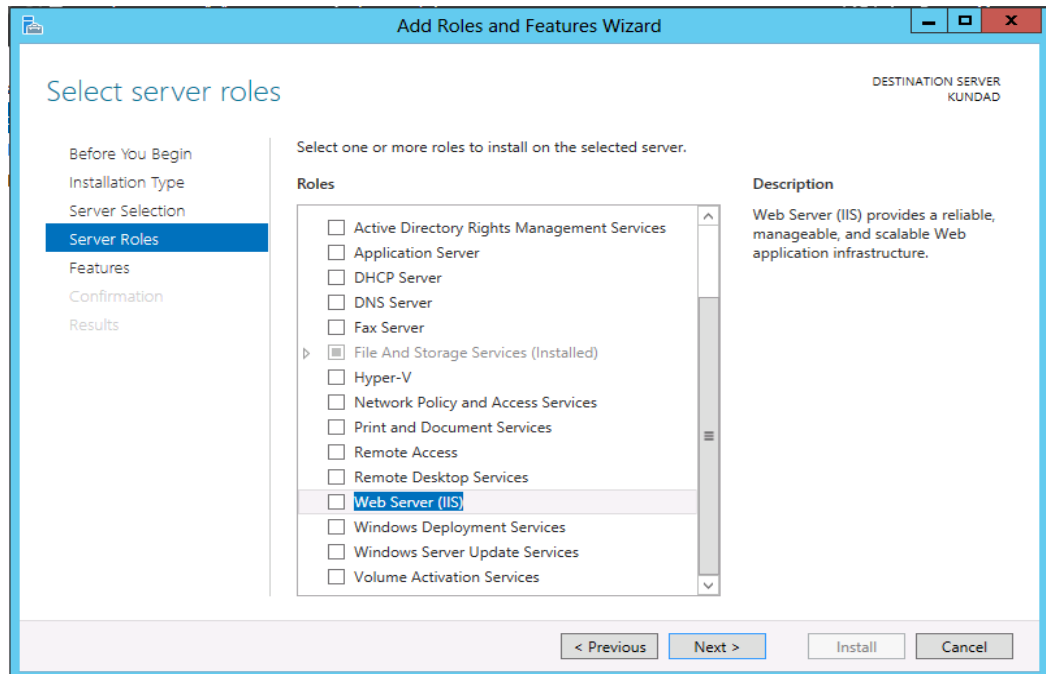
4. Välj installationstyp **Role-based or feature-based installation**



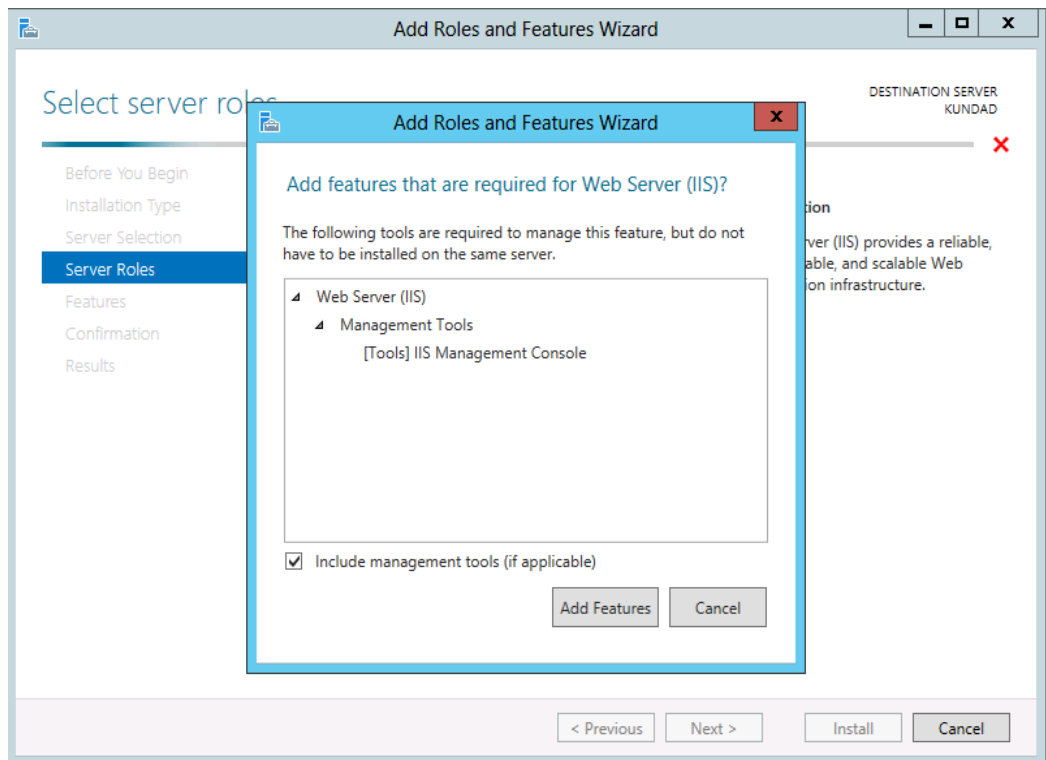
5. Välj din server från n lista (troligen finns bara en i listan)



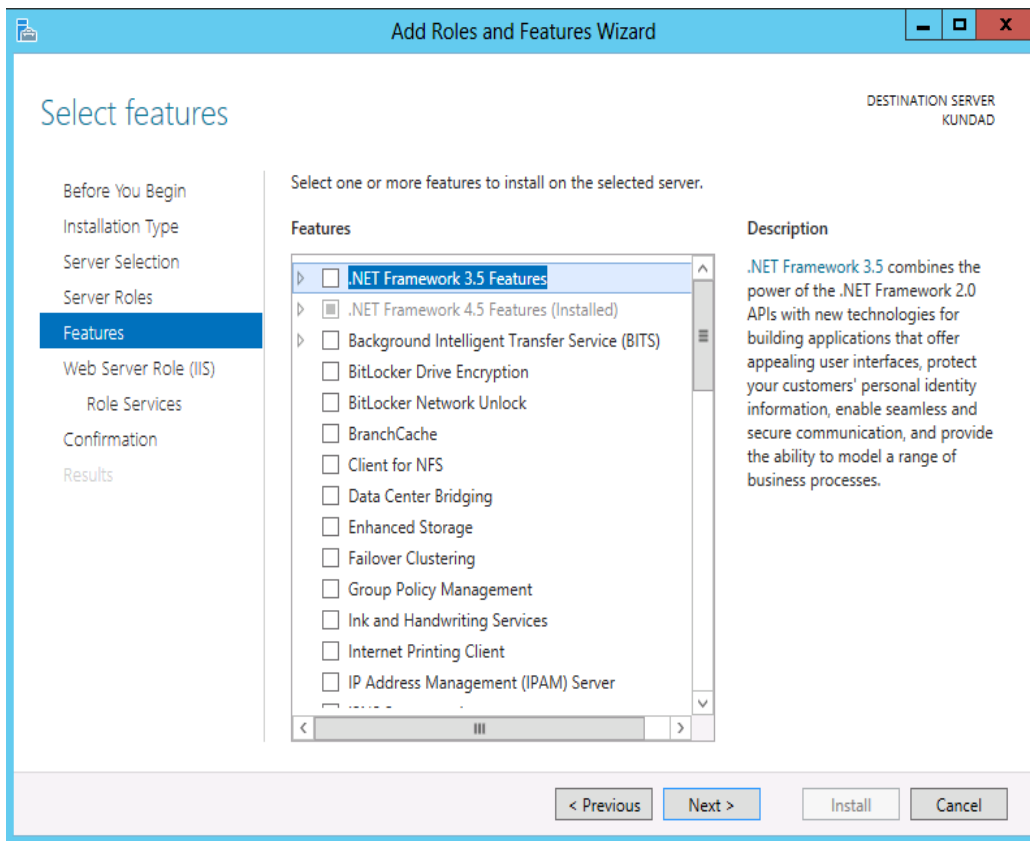
6. Kryssa i **Web Server (IIS)** från listan av Server Roles



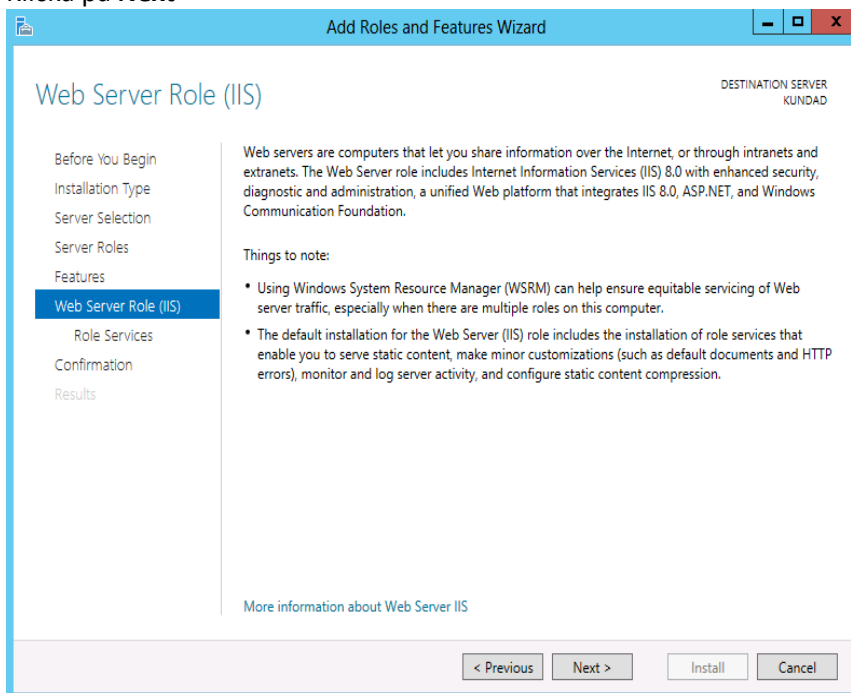
7. Klicka på **Add features**



8. Klicka på **Next**



9. Klicka på **Next**



Nu är det dags att **välja Role Services** i Web Servern IIS

4.3 Installera/verifiera IIS Role services

1. Kontrollera/kryssa i Role Services enligt nedanstående bilder

Select role services

DESTINATION SERVER
KUNDAD

Before You Begin
Installation Type
Server Selection
Server Roles
Features
Web Server Role (IIS)
Role Services
Confirmation
Results

Select the role services to install for Web Server (IIS)

Role services

- Web Server
 - Common HTTP Features
 - Default Document
 - Directory Browsing
 - HTTP Errors
 - Static Content
 - HTTP Redirection
 - WebDAV Publishing
 - Health and Diagnostics
 - HTTP Logging
 - Custom Logging
 - Logging Tools
 - ODBC Logging
 - Request Monitor
 - Tracing
 - Performance
 - Static Content Compression
 - Dynamic Content Compression
 - Security
 - Request Filtering
 - Basic Authentication
 - Centralized SSL Certificate Support
 - Client Certificate Mapping Authentication
 - Direct Authentication

Description

Tracing provides infrastructure to diagnose and troubleshoot Web applications. With failed request tracing, you can troubleshoot difficult to capture events like poor performance, or authentication related failures. This feature buffers trace events for a request and only flushes them to disk if the request falls into a user-configured error condition.

< Previous Next > Install Cancel

Select role services

DESTINATION SERVER
KUNDAD

- Before You Begin
- Installation Type
- Server Selection
- Server Roles
- Features
- Web Server Role (IIS)
- Role Services**
- Confirmation
- Results

Select the role services to install for Web Server (IIS)

Role services

<input type="checkbox"/>	IIS Client Certificate Mapping Authentication
<input type="checkbox"/>	IP and Domain Restrictions
<input type="checkbox"/>	URL Authorization
<input type="checkbox"/>	Windows Authentication
<input checked="" type="checkbox"/>	Application Development
<input type="checkbox"/>	.NET Extensibility 3.5
<input checked="" type="checkbox"/>	.NET Extensibility 4.5
<input type="checkbox"/>	Application Initialization
<input checked="" type="checkbox"/>	ASP
<input type="checkbox"/>	ASP.NET 3.5
<input checked="" type="checkbox"/>	ASP.NET 4.5
<input type="checkbox"/>	CGI
<input checked="" type="checkbox"/>	ISAPI Extensions
<input checked="" type="checkbox"/>	ISAPI Filters
<input type="checkbox"/>	Server Side Includes
<input type="checkbox"/>	WebSocket Protocol
<input checked="" type="checkbox"/>	FTP Server
<input type="checkbox"/>	FTP Service
<input type="checkbox"/>	FTP Extensibility
<input type="checkbox"/>	IIS Hostable Web Core
<input checked="" type="checkbox"/>	Management Tools
<input checked="" type="checkbox"/>	IIS Management Console
<input type="checkbox"/>	IIS 6 Management Compatibility
<input checked="" type="checkbox"/>	IIS Management Scripts and Tools

Description

Active Server Pages (ASP) provides a server side scripting environment for building Web sites and Web applications. Offering improved performance over CGI scripts, ASP provides IIS with native support for both VBScript and JScript. Use ASP if you have existing applications that require ASP support. For new development, consider using ASP.NET.

< Previous Next > Install Cancel

2. Klicka på Install

Confirm installation selections

DESTINATION SERVER
KUNDAD

- Before You Begin
- Installation Type
- Server Selection
- Server Roles
- Features
- Web Server Role (IIS)
- Role Services
- Confirmation**
- Results

To install the following roles, role services, or features on selected server, click Install.

Restart the destination server automatically if required

Optional features (such as administration tools) might be displayed on this page because they have been selected automatically. If you do not want to install these optional features, click Previous to clear their check boxes.

Web Server (IIS)	
Web Server	
Common HTTP Features	
Static Content	
Default Document	
Directory Browsing	
HTTP Errors	
Application Development	
.NET Extensibility 4.5	
ASP.NET 4.5	
ASP	
ISAPI Extensions	
ISAPI Filters	
Health and Diagnostics	
HTTP Logging	
Logging Tools	
Request Monitor	
Tracing	
Security	

[Export configuration settings](#)
[Specify an alternate source path](#)

< Previous Next > Install Cancel

3. Klart